

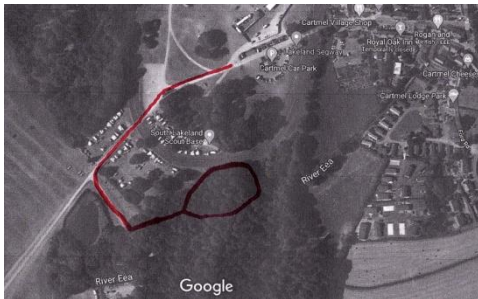


Woodland trail



Hi there everyone, we hope that you and your families are well and keeping safe.

Friends would like to share this little adventure with you; we hope that you will find it helpful in keeping your little ones sense of curiosity alive during these challenging times.



We have painted ten stones and have hidden them in the woodland area which we use for Forest Schools. We suggest that you start your trail at the camp fire. We estimate between 45 min to 1 hour to complete.

The photos show you roughly what you are looking for. You may want to use the clues and/or the map to help you.



Health & Safety bit - Please adhere to current government guidelines regarding social distancing and meeting groups of people. Please refrain from touching the stones and take photos. Upload them to your child's Seesaw journal to share with their teacher.



Clues

Fire - The toasting of marshmallows and the singing of songs. (Behind a tree stump near to the fire)



Fish - Where the fish swim in the shade. (Near the stream on the edge of the bridge)



Tree - A tree which is poisonous to humans but holds red berries in the Winter for the birds. (Yew tree near the campfire and stream)





Bluebells - This view point will allow you to see all the Spring Bluebells in our happy place. (Raised area near the dens)

Toadstools - A tree stump marks the spot for a perfect place for toadstools to grow. (Where the paths cross in the middle of our forest schools area)



Horse - You are close enough to touch them from this fence corner as they gallop on by. (Fence corner nearest to the racecourse looking towards the Scout hut)

Bird - A large Beech branch where you can



tree with stones under and a low perch like a bird and listen to them sing. (Large Beech tree near the boundary wall)



Damsel fly - The smoke from our fire may keep the midges away but behind you the Damsel flies will play. (Along the stream side on a tree near to the camp fire area)



Den - High on the hill where we build our dens. (Raised area overlooking the racecourse the highest point at the base of a tree)



Rainbow - As you leave our Forest schools space which path will you choose from our happy place? (After you climb up out of the clearing there is a junction of paths)



Map not to scale

